

## Projects (All)



### Fortune Plaza Commercial Center

2010

[More information](#)



### Fortune Plaza office building

2010 (First Prize), Chongqing, China

[More information](#)



### Pingyao South city planning

2006, Pingyao, China

[More information](#)



### Taigu Library

2009-2010, Taigu, China

[More information](#)

## Projects (All)



### 108 National Road design

2009-2010, Taigu, China

[More information](#)



### Crook bridge of Taigu

2009-2010, Taigu, China

[More information](#)



### Taigu Cable Stayed bridge

2009-2010, Taigu, China

[More information](#)



### Water Villas

2009-2010, Tianjin, China

[More information](#)

## Projects (All)



### Labin Wine cellar

2009-2010, Beijing (Zongbu Jidi Advanced Business Park), China

[More information](#)



### Master planning of Taigu

2009-2010, Taigu, China

[More information](#)



### Beijing French Embassy

2009-2010, Beijing (French Embassy), China

[More information](#)



### Taigu North plaza

2009-2010, Taigu, China

[More information](#)

## Projects (All)



### Train station plaza

2009-2010, Taigu, China

[More information](#)



### White pagoda plaza

2009-2010, Taigu, China

[More information](#)



### Taigu ancient city East Gate plaza

2009-2010, Taigu, China

[More information](#)

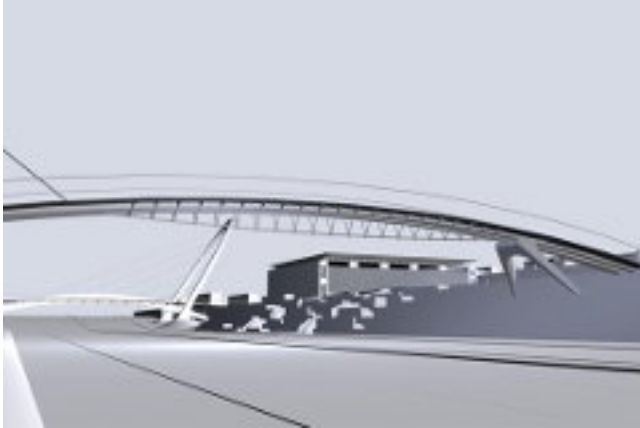


### Taixuxian Road landscape

2009-2010, Taigu, China

[More information](#)

## Projects (All)



### City wall cable bridge

2009, Taigu, China

[More information](#)



### X2 office and commercial area

2008 (competition), Shanghai, China

[More information](#)



### Pingyao Greenbelt Landscape

2008, Pingyao, China

[More information](#)



### Pingyao Mix functions project

2008-2009, Pingyao, China

[More information](#)

## Projects (All)



### Pingyao residential area

2008-2009, Pingyao, China

[More information](#)



### Pingyao Nanbu Office building

2008-2009, Pingyao, China

[More information](#)



### Pingyao Grand Hotel

2008-2009, Pingyao, China

[More information](#)



### Pingyao Club house

2008-2009, Pingyao, China

[More information](#)

## Projects (All)



### Perfect World lobby design

2008, Beijing, China

[More information](#)



### Shuguang Avenue landscape

2008, Pingyao, China

[More information](#)



### Pepsi office building and factory

Finished in 2008, Chongqing, China

[More information](#)



### Daxing Comercial and office project

2008, , China

[More information](#)

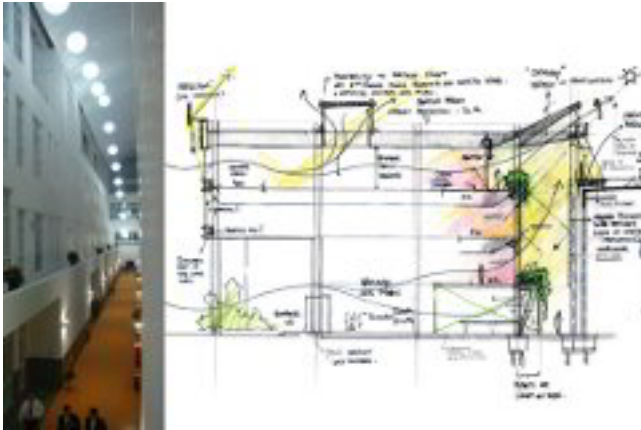
## Projects (All)



### Daxing mix function project

2008, Beijing (Daxing), China

[More information](#)



### Tetrapac Sidel Polo project

2007-2008 (finished), Beijing (Yizhuang BDA -Development Area), China

[More information](#)



### Liugenge Bridge

2006, Pingyao, China

[More information](#)

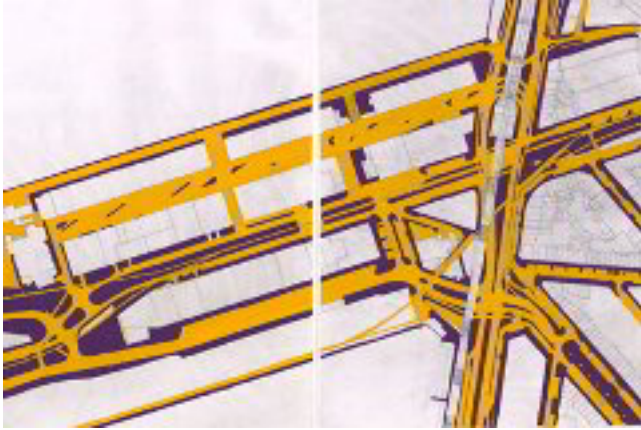


### China National Theatre

2004, Beijing (National Theater), China

[More information](#)

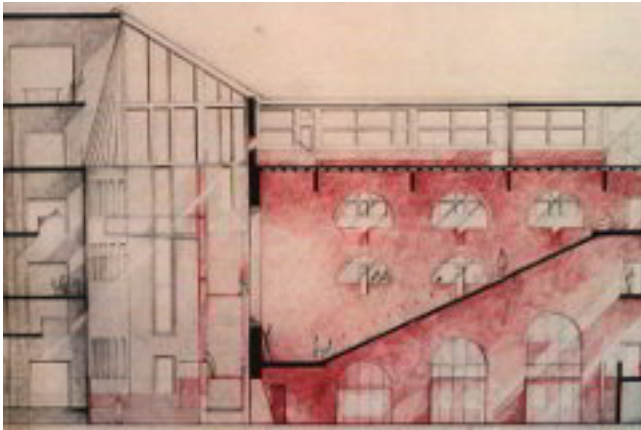
## Projects (All)



### Rotterdam Katendrecht planning

2001, Rotterdam, Holland

[More information](#)



### European Architecture School

2000, Brussels, Belgium

[More information](#)



### Poet Bridge House

1996, Dover, England

[More information](#)